



COVER STYL'
SMART INTERIOR DESIGN

INDEX

A			
A1	W	✓	81
A4	W	🕒	80
AA01	W	🕒	58
AA02	W	🕒	59
AA04	W	🕒	59
AA05	W	🕒	59
AA06	W	🕒	61
AA08	W	🕒	60
AA09	W	🕒	61
AA11	W	🕒	59
AA12	W	✓	61
AA13	W	🕒	58
AA14	W	✓	61
AA15	W	✓	110
AA17	W	🕒	58
AB02	W	🕒	25
AB03	W	🕒	25
AB05	W	✓	26
AB06	W	🕒	26
AB07	W	🕒	26
AC01	W	🕒	25
AC04	W	🕒	25
AF01	W	🕒	55
AF02	W	🕒	54
AF03	W	✓	54
AF05	W	🕒	55
AF06	W	🕒	55
AF07	W	🕒	54
AF08	W	✓	54
AF09	W	🕒	54
AF10	W	✓	55
AG01	W	🕒	62
AG02	W	🕒	63
AG07	W	🕒	62
AG08	W	🕒	63
AG09	W	🕒	65
AG10	W	🕒	66
AG11	W	🕒	63
AG13	W	🕒	62
AG14	W	✓	63
AG15	W	🕒	66
AG16	W	🕒	66
AG17	W	🕒	65
AG18	W	🕒	65
AG20	W	✓	62
AG21	W	🕒	64
AL07	ME	🕒	109
AL08	W	🕒	63
AL09	F	✓	114
AL10	W	🕒	62
AL11	ME	✓	109
AL12	W	🕒	66
AL13	ME	🕒	109
AL14	W	✓	110

A			
AL15	ME	✓	109
AL17	ME	🕒	109
AL23	W	🕒	62
AL24	W	✓	64
AL25	W	🕒	67
AL26	W	🕒	63
AL28	W	🕒	66
AL29	W	✓	62
AL30	W	🕒	63
AL36	W	🕒	62
AT02	W	🕒	67
AT03	W	🕒	65
AT04	W	✓	66
AT05	W	🕒	66
AT06	W	🕒	67
AZ01	W	🕒	53
AZ02	W	🕒	53
AZ03	W	🕒	53
AZ04	W	🕒	53
AZ06	W	🕒	52
AZ07	W	✓	52
AZ10	W	🕒	53
B			
B1	W	✓	77
B3	W	✓	74
B4	W	✓	66
B5	W	✓	77
B6	W	✓	110
B8	W	✓	58
B9	W	✓	61
B50	W	✓	53
C			
CT01	W	🕒	75
CT02	W	🕒	78
CT04	W	🕒	81
CT05	W	🕒	77
CT06	W	🕒	76
CT08	W	🕒	77
CT09	W	🕒	77
CT10	W	🕒	78
CT11	W	🕒	77
CT13	W	🕒	70
CT14	W	🕒	73
CT15	W	🕒	79
CT16	W	🕒	75
CT17	W	✓	70
CT18	W	🕒	70
CT19	W	🕒	70
CT20	W	🕒	72
CT21	W	🕒	80
CT22	W	🕒	77
CT24	W	🕒	80

C			
CT25	W	🕒	80
CT26	W	🕒	81
CT27	W	🕒	79
CT28	W	🕒	72
CT29	W	🕒	80
CT33	W	🕒	72
CT35	W	✓	79
CT36	W	🕒	79
CT37	W	🕒	76
CT40	W	🕒	73
CT41	W	🕒	75
CT42	W	🕒	78
CT43	W	🕒	77
CT44	W	🕒	77
CT45	W	🕒	75
CT46	W	🕒	74
CT48	W	🕒	74
CT49	W	🕒	73
CT50	W	🕒	81
CT52	W	🕒	81
CT53	W	🕒	75
CT54	W	🕒	77
CT55	W	🕒	81
CT56	W	🕒	79
CT57	W	🕒	80
CT58	W	✓	81
CT59	W	🕒	81
CT60	W	🕒	79
CT61	W	🕒	81
CT62	W	🕒	73
CT66	W	🕒	81
CT67	W	🕒	80
CT68	W	🕒	81
CT69	W	✓	79
CT70	W	🕒	77
CT71	W	🕒	77
CT73	W	🕒	70
CT74	W	🕒	70
CT75	W	🕒	75
CT76	W	🕒	71
CT77	W	🕒	74
CT78	W	🕒	76
CT79	W	🕒	73
CT80	W	🕒	79
CT82	W	✓	74
CT84	W	🕒	79
CT87	W	🕒	75
CT88	W	🕒	79
CT89	W	🕒	80
CT90	W	🕒	73
CT91	W	🕒	70
CT92	W	🕒	73
CT93	W	🕒	73
CT94	W	🕒	73

C			
CT95	W	🕒	70
CT96	W	🕒	75
CT97	W	🕒	75
CT98	W	🕒	75
CT99	W	🕒	76
CT100	W	🕒	73
CT101	W	🕒	73
CT102	W	🕒	70
D			
D1	W	✓	80
D4	W	✓	69
E			
E4	W	✓	80
E50	W	✓	67
F			
F4	W	✓	57
F5	W	✓	59
F6	W	✓	80
F7	W	✓	67
G			
G0	W	✓	111
G6	W	✓	110
H			
H4	W	✓	69
H5	W	✓	81
H10	W	✓	111
H50	W	✓	111
I			
I7	W	✓	111
I9	W	✓	111
I10	W	✓	110
I11	W	✓	111
I14	W	✓	75
J			
J2	W	✓	27
J3	SC	✓	21
J4	SC	✓	27
J5	SC	✓	27
J7	G	✓	27
J9	G	✓	27
J14	W	✓	27
J15	G	✓	27
J16	G	✓	27
J17	W	✓	25
J18	W	✓	25

K			
K1	SC	✓	21
K2	SC	✓	115
K4	SC	✓	21
K5	SC	✓	21
K6	SC	✓	21
K7	SC	✓	21
KN02	MA	✓	93
KN04	MA	🕒	93
KN05	MA	🕒	93
L			
L2	SC	✓	20
L3	SC	✓	20
L50	SC	✓	115
LP01	ME	🕒	27
M			
M0	SC	🕒	20
M4	SC	✓	20
M5	SC	✓	20
M6	SC	✓	20
M7	SC	✓	21
M8	SC	✓	20
M9	SC	✓	21
M10	SC	✓	20
M50	SC	✓	20
MA10	W	🕒	27
MA12	W	🕒	27
MA14	W	🕒	27
MA16	W	✓	27
MK13	MA	✓	112
MK14	MA	✓	112
MK15	NS	✓	93
MK18	F	✓	100
MK19	F	🕒	100
N			
N3	SC	✓	21
ND01	ME	🕒	107
ND02	ME	🕒	106
ND03	ME	🕒	107
ND04	ME	🕒	107
ND05	ME	🕒	107
ND07	ME	🕒	107
NE11	NS	✓	27
NE13	W	✓	110
NE24	NS	✓	95
NE25	NS	🕒	95
NE26	NS	✓	95
NE27	NS	🕒	92
NE28	NS	✓	92
NE29	NS	✓	93
NE31	MA	✓	89
NE32	MA	🕒	89

N			
NE33	F	✓	101
NE36	F	🕒	101
NE37	F	✓	101
NE38	F	✓	101
NE40	L	✓	113
NE41**	L	✓	102
NE42**	L	✓	102
NE43**	L	✓	102
NE45	W	🕒	26
NE46	W	✓	25
NE47	ME	✓	106
NE48	ME	✓	106
NE49	ME	✓	107
NE51	ME	✓	106
NE53	SC	✓	20
NE54	SC	✓	19
NE55	SC	🕒	20
NE56	SC	🕒	21
NE57	W	✓	72
NE61	W	✓	71
NE62	W	🕒	80
NE63	W	✓	70
NE64	W	🕒	72
NE65	W	🕒	72
NE66	W	🕒	71
NE67	W	🕒	73
NE68	W	✓	76
NE69	MA	✓	86
NE70	MA	✓	87
NE71	MA	🕒	88
NE72	MA	✓	92
NE73*	F	✓	99
NE74*	F	✓	99
NE77	ST	✓	23
NE78	ST	✓	23
NE79	ST	✓	23
NE80	ST	✓	23
NE81	ST	✓	23
NE82	ST	✓	23
NE83	SC	🕒	20
NF01	SC	🕒	19
NF02	SC	🕒	19
NF03	SC	🕒	19
NF04	SC	🕒	20
NF05	SC	🕒	20
NF06	SC	✓	20
NF07	SC	🕒	20
NF08	SC	🕒	21
NF09	SC	🕒	21
NF10	SC	🕒	21
NF11	SC	🕒	21
NF12	ST	🕒	22
NF13	ST	✓	22
NF14	ST	✓	22

N			
NF15	ST	🕒	23
NF16	ST	🕒	23
NF17**	W	🕒	24
NF18**	W	🕒	24
NF19**	W	✓	24
NF20**	W	🕒	24
NF21	W	🕒	25
NF22	W	🕒	25
NF23	W	🕒	25
NF24	W	🕒	26
NF25	W	🕒	26
NF26	W	🕒	26
NF27	W	🕒	31
NF28	W	✓	31
NF29	W	✓	32
NF30	W	🕒	32
NF31	W	🕒	34
NF32	W	✓	34
NF33	W	🕒	34
NF34	W	✓	36
NF35	W	🕒	36
NF36	W	✓	38
NF37	W	🕒	38
NF38	W	🕒	39
NF39	W	🕒	39
NF40	W	✓	41
NF41	W	🕒	41
NF42	W	🕒	42
NF43	W	✓	42
NF44	W	✓	43
NF45	W	🕒	43
NF46	W	✓	45
NF47	W	🕒	45
NF48	W	🕒	46
NF49	W	✓	46
NF50	W	🕒	48
NF51	W	🕒	48
NF52	W	🕒	48
NF53	W	🕒	50
NF54	W	🕒	50
NF55	W	✓	51
NF56	W	✓	51
NF57	W	✓	56
NF58	W	🕒	56
NF59	W	🕒	56
NF61	W	🕒	57
NF62	W	🕒	57
NF63	W	🕒	57
NF64	W	🕒	57
NF65	W	🕒	58
NF66	W	✓	58
NF67	W	🕒	59
NF68	W	🕒	60

N		
---	--	--



LET'S MAKE A **CHANGE** AS
WHY REPLACE WHEN YOU CAN UPGRADE ?

As yes when using our solution you are contributing to help change the world!

This is part of making a change, being part of a new thinking generation.

Thank you for being part of the change!

RECYCLE | RECUPERATE | RECOVER | REUSE

Technical Information

Interior Film

Our stretchable architectural film is a decorative film with adhesive that is applicable on site.

Recreate your world with our stretchable architectural film. It is an ideal way to finish many environments on site with little or no down time. Our stretchable architectural film is used extensively for interior applications such as Hotels, Shops, Washrooms, Student accomodation, Elevators, etc. With its light weight and minimal thickness, our stretchable architectural film is a popular choice for cruise ship interiors. Our stretchable architectural film offers hundreds of patterns including Solid Colour, Metallic, Glitter, Leather, Fabric, Soft Touch and also natural material replications such as Wood, Stone and Marble. Our stretchable architectural film's original pressure sensitive adhesive ensures clean, fast installation on a variety of substrates. With its superior flexibility, our stretchable architectural film can be installed on highly detailed and 3D surfaces.

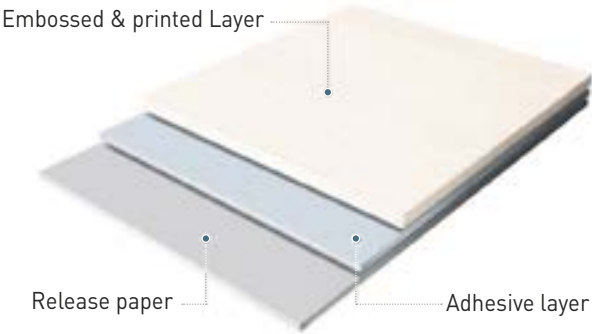
Product Structure

Our stretchable architectural film is a printed film with adhesive

1. Embossed & printed film layer (vinyl-chloride plastic)
2. Simplified adhesive (acrylic plastic)
3. Release paper

The above is a representative structure of our stretchable architectural film .

The actual structures and materials may be slightly different for each series.



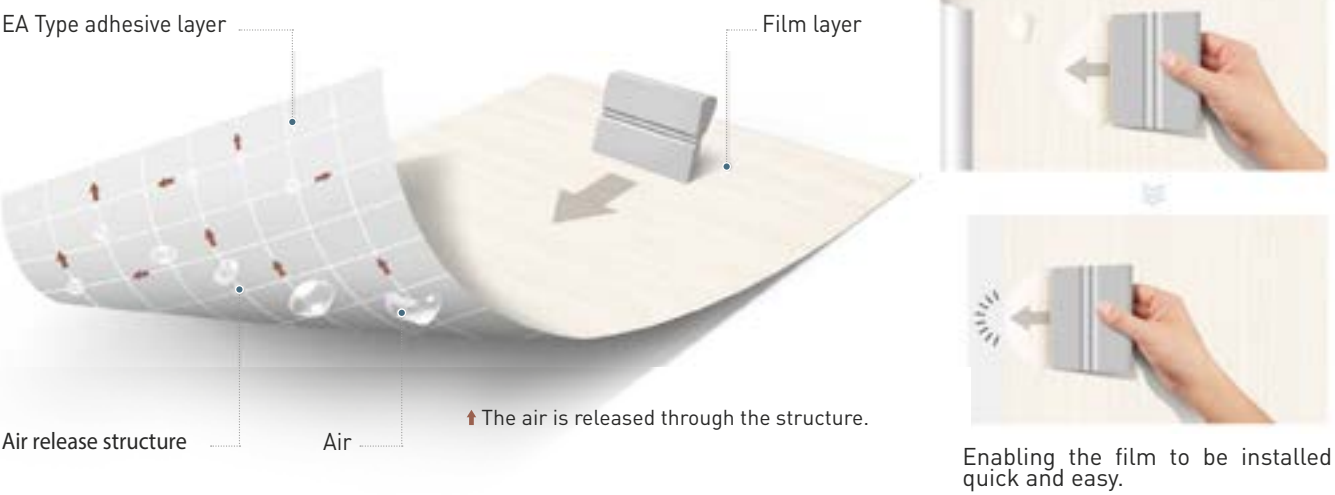
Easy to install with Air release adhesive

Our stretchable architectural film is applied using an Acryl type adhesive, which has an adhesive surface with grid grooves for air-release between the film and the substrate.

The air is released along these grooves, enabling the film to be quickly and easily affixed to large or complex surfaces. This provides a higher quality finish.

Facilitates the release of air when the film is affixed, enabling easy application to large or complex surfaces.

Air release structure



Environment

We pay attention to nature

Our stretchable architectural film is an eco-friendly film that care about healthy environment.

- Free from harmful heavy metals (lead, cadmium, mercury, hexavalent chromium, etc)
- Formaldehyde (HCHO), the substance that causes sick house syndrome, is not released.
- Minimized release of volatile organic compounds (TVOC, toluene, etc)
- It meets the safety standard (KF mark standard) applied to wallpaper and paperboard.
- Meets the safety requirements for hazardous chemicals in the Common Safety Standards of Children’s Products.
- Excellent maintenance and anti-mold function, which helps to maintain a pleasant surrounding environment.

Heavy Metal [Pb, Cd, Hg, CrVI]		Formaldehyde [HCHO]		Phthalate	
Standard		Standard		Standard	
[Pb] 5 mg/kg [Cd] 0.5 mg/kg [Hg] 2 mg/kg [CrVI] 1 mg/kg	None detected	0.12 mg/m³h	None detected	[DEHP] less than 0.1% [DBP] less than 0.1% [BBP] less than 0.1%	None detected

‘Hazardous chemicals’ criteria for the Common Safety Standards for Children's Products

Hazardous Substances [Sb, As, Ba, Cd, Cr, Pb, Hg, Se]			
Standard		Standard	
[Sb] 60 mg/kg [As] 25 mg/kg [Ba] 1000 mg/kg [Cd] 75 mg/kg	Satisfactory	[Cr] 60 mg/kg [Pb] 90 mg/kg [Hg] 60 mg/kg [Se] 500 mg/kg	Satisfactory

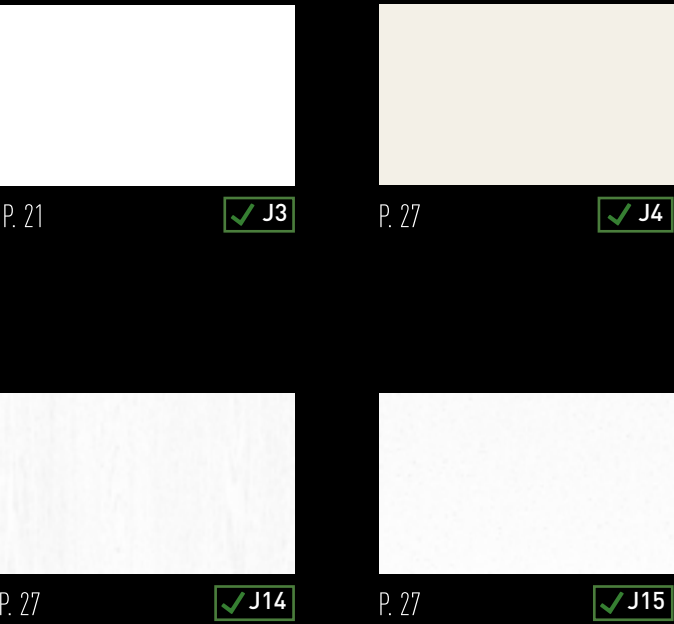
Safety

We pay attention to Safety

Our stretchable architectural film is a safe interior film that can be used in any environment with excellent flame retardancy and quality stability.

Flame Retardancy [Certified by the Korean Fire Industry Technical Institute]		Stain resistance	
Carbonization length less than 20cm	Satisfactory		
Carbonization area less than 30cm²			
Flame retardant certification less than 3sec			
Smoke density 200 Ds		No Stains	

Obtain the certificate, Introduction of company for biding construction projects, construction guide of our products by inquiring with our head office or distributor.



PRINTABLE





2019 | Zurich, Switzerland



BEFORE



AFTER



CT83

HUNDREDS OF DOORS RENOVATED FAST & WITH STYLE



2019 | Luxembourg



D4



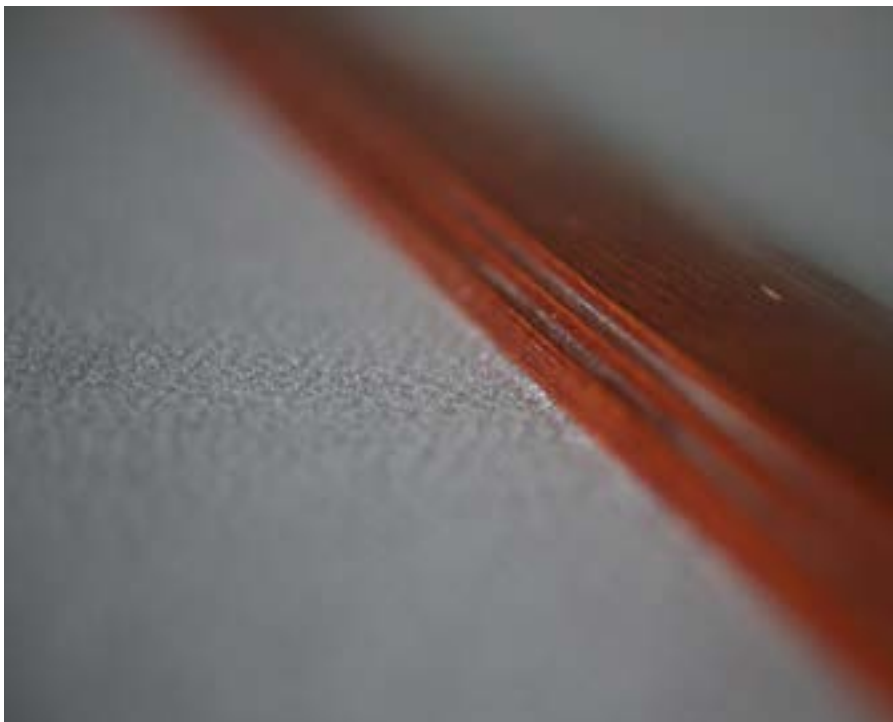
RECYCLE, RECUPERATE, RECOVER & REUSE.
THE INNOVATION OF RENOVATION!



BEFORE

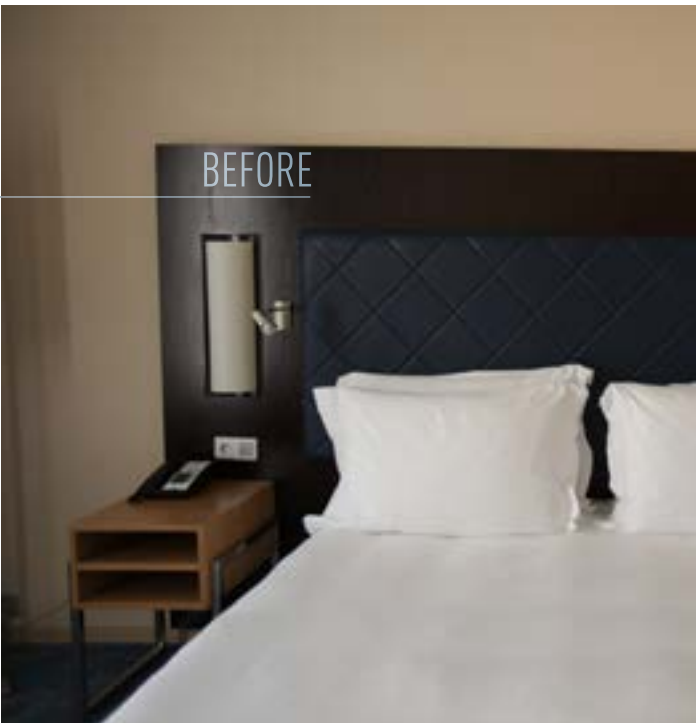


AFTER



THE LIMITS ARE YOUR IMAGINATION,
DOORS MADE OF LEATHER? ANYTHING IS POSSIBLE!

DON'T WAIT ANY LONGER, SPARE BETWEEN 50-70%
FROM TRADITIONAL RENOVATION. AN INVESTMENT
WHICH WILL PAY BACK

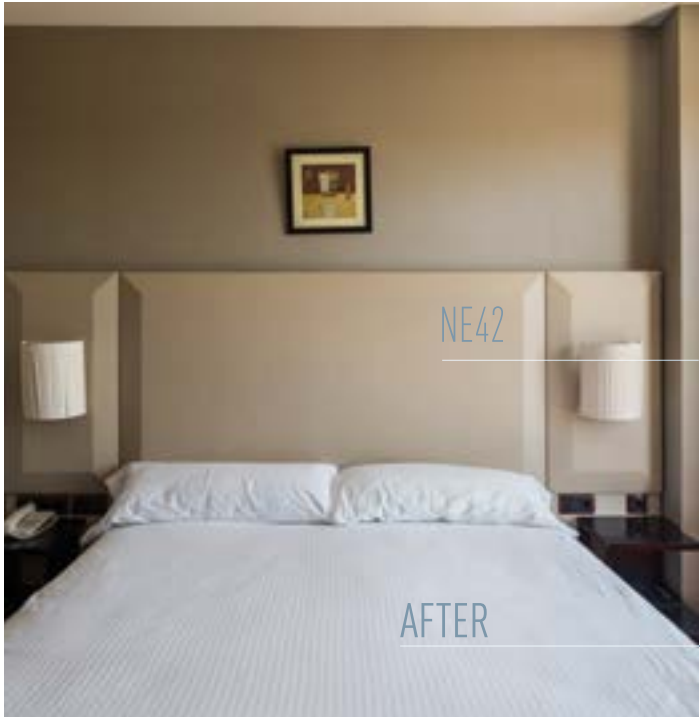
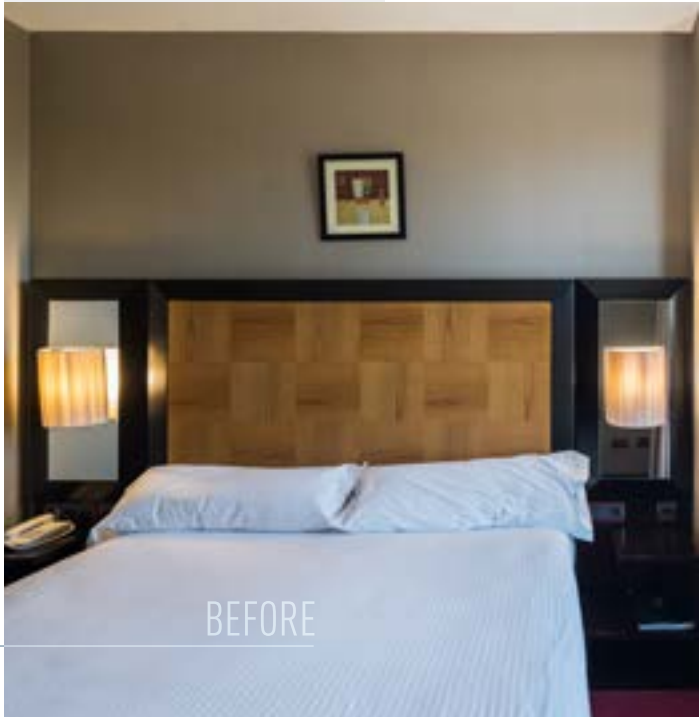


M
HOTEL
MAYORAZGO
2020 | Madrid, Spain



PRINCESA DE ESMERALDA
APARTAMENTOS
2019 | Madrid, Spain

2019 | Madrid, Spain



AFFORDABLE, STYLISH & SUITABLE FOR HUMID ENVIRONMENT – YES!



REFURBISH WITHOUT HAVING TO CLOSE OR DISCONTINUE YOUR DAILY ACTIVITY, IT'S POSSIBLE!

BETTER, GLITTER, STRONGER



R6

LIGHT UP YOUR
EVERYDAY LIFE









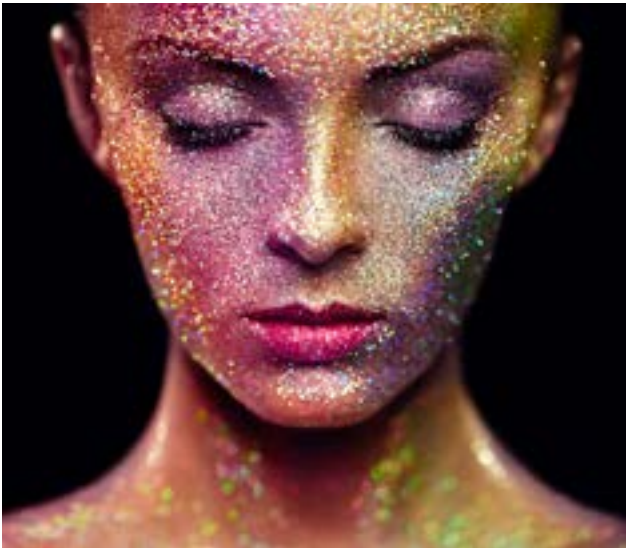
✓R10



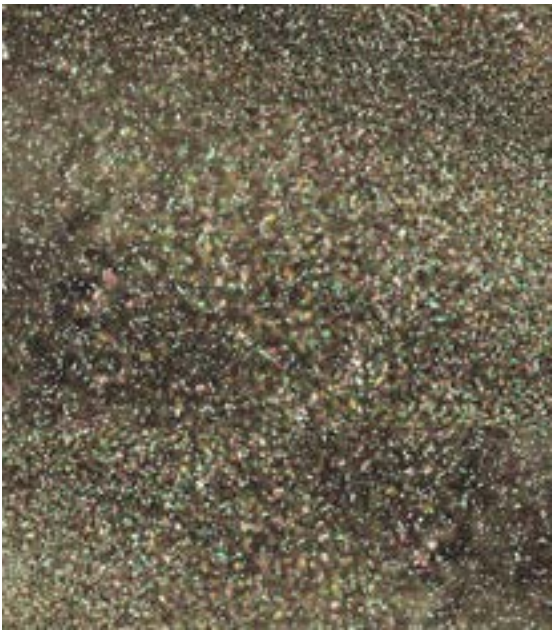
✓R11



✓R12



✓R13



✓R14



✓R15



✓R16



✓R18



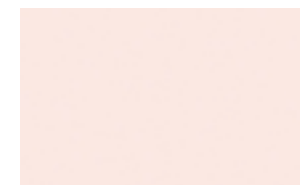
✓R19

or

Look at life in colour with our Solid Colour range! Each colour creates a unique atmosphere. Whether “pop” or sober, they embellish your walls and furniture. What are you waiting for? Give your bedrooms or lounges their own unique personality!

Solid Colour

Unique environments completed with colour and texture. The space that draws attention without needing to add eye-catching decorations. Express your own unique self.



⌚ NF01



⌚ NF03



⌚ NF02



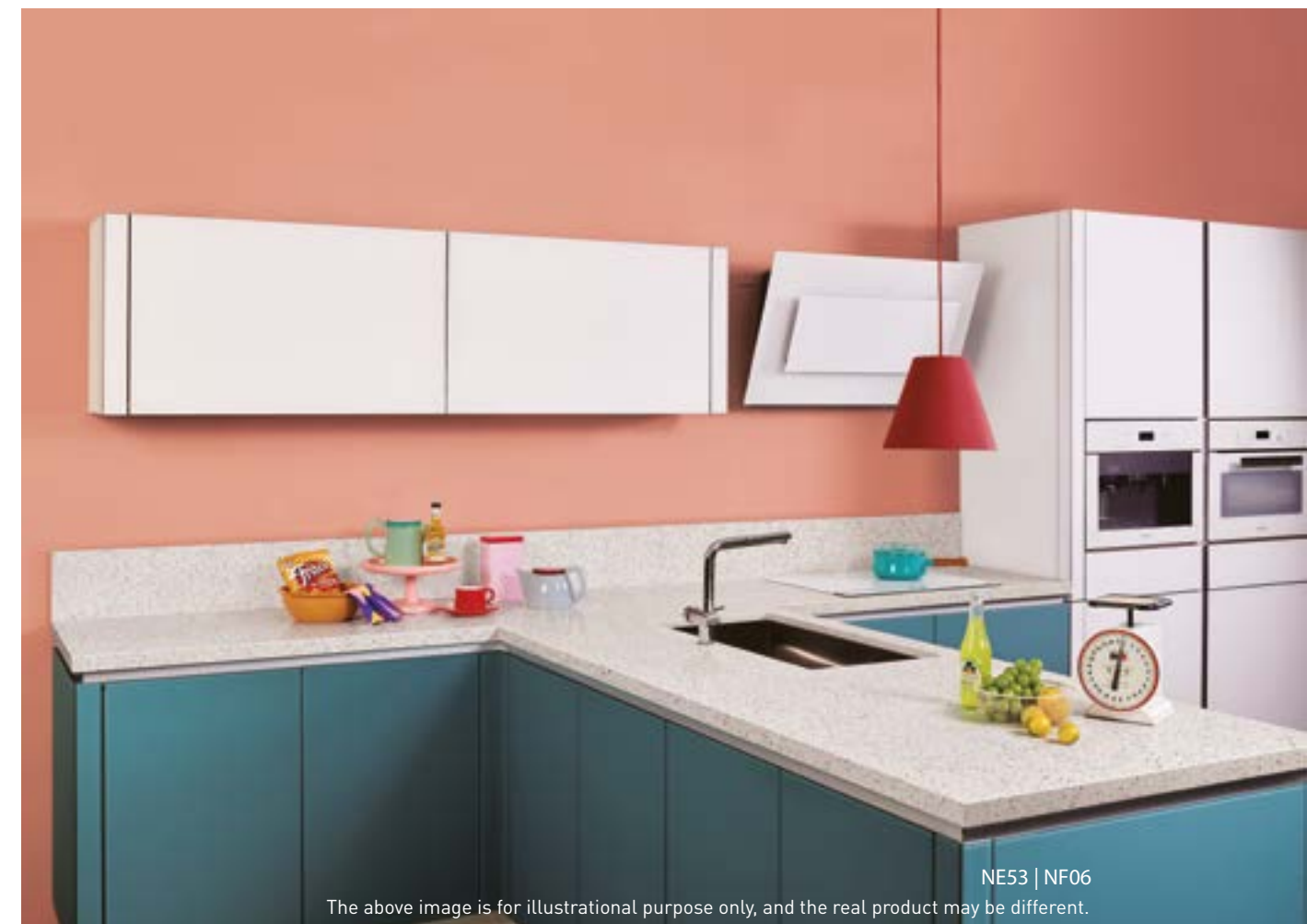
⌚ RM16



✓ NE54



⌚ RM15



NE53 | NF06

The above image is for illustrational purpose only, and the real product may be different.

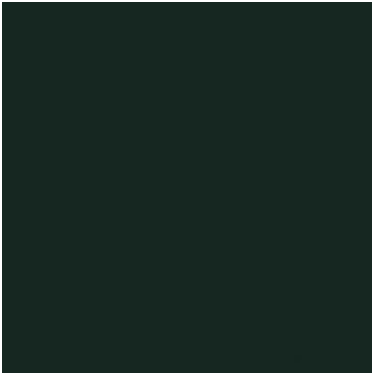


SOFT TOUCH



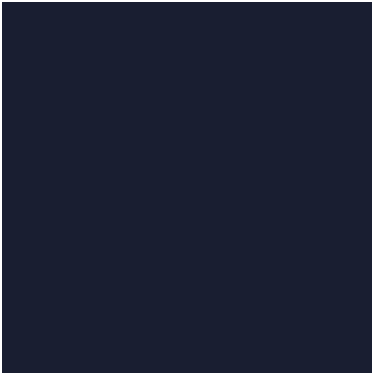
SOFT TOUCH

⌚ NF12



SOFT TOUCH

✓ NF13

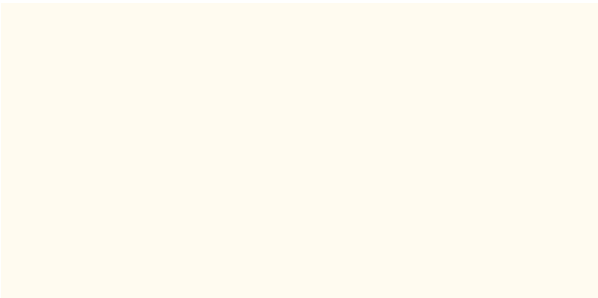


SOFT TOUCH

✓ NF14

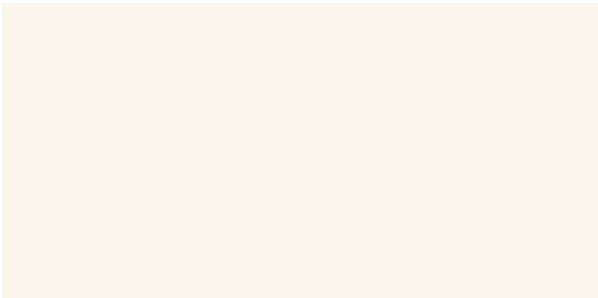


Our architectural film Soft Touch Series is a premium product featuring a differentiated special surface with texture finish that has outstanding contamination and scratch resistance. The gentle visual effects and luxurious touch further upgrades the class of the space.



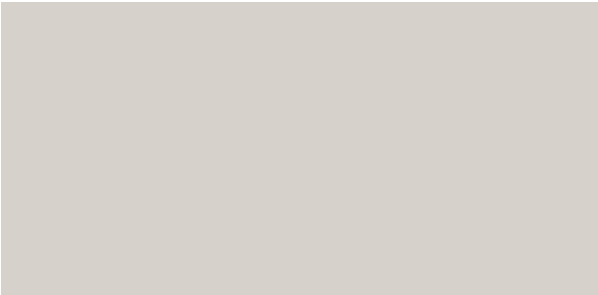
SOFT TOUCH

✓ NE77



SOFT TOUCH

⌚ NF15



SOFT TOUCH

⌚ NF16



SOFT TOUCH

✓ NE78



SOFT TOUCH

✓ NE79



SOFT TOUCH

✓ NE82



SOFT TOUCH

✓ NE80



SOFT TOUCH

✓ NE81

Painted Wood



⌚ NF17



⌚ NF18



✓ NF19



⌚ NF20



⌚ AC01



⌚ AC04



✓ J17



⌚ NF21



⌚ AB02



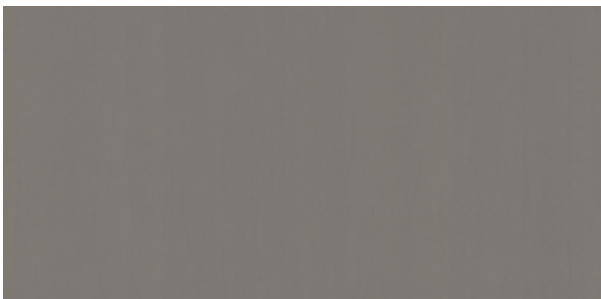
⌚ NF23



⌚ AB03



⌚ NF22



✓ NE46



✓ J18

Painted Wood



NF25

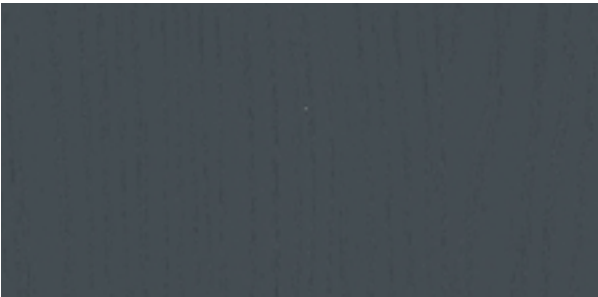
The above image is for illustrational purpose only, and the real product may be different.



⌚ NE45



⌚ AB06



✓ AB05



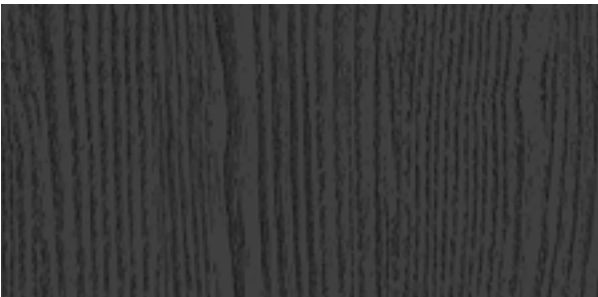
⌚ NF24



⌚ AB07

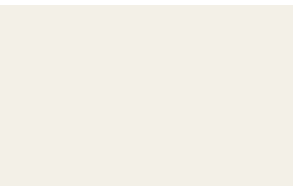


⌚ NF25

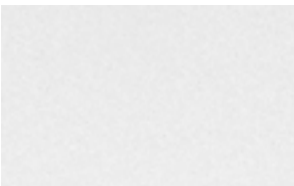


⌚ NF26

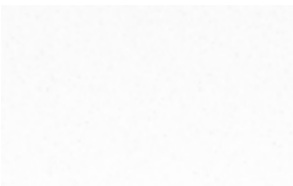
Texture



✓ J4



✓ J7



✓ J15



✓ MA16



✓ Q2



⌚ MA12



⌚ MA10



✓ J14



⌚ LP01



✓ Q1



⌚ MA14



✓ J2



✓ NE11



✓ J16



✓ J9



✓ J5



NE11

The above image is for illustrational purpose only, and the real product may be different.

02

Inspired by a number of timber species, our Wood range reveals the charm of your rooms, giving them a natural touch. Are you dreaming of an interior with a “Swiss chalet” or Canadian-style look? An oak, beech, teak look....Placed in strategic places, such as a table or a wardrobe door, you would only need the smell of the woods and birdsong to transport you to the middle of the forest.

Wood



NF32

Wood texture naturally fits anywhere



NF28

The above image is for illustrational purpose only, and the real product may be different.

Origin Wood



🕒 NF27



✅ NF28

Origin Wood



✓ NF29



⌚ NF30



NF29

The above image is for illustrational purpose only, and the real product may be different.

Origin Wood



🕒 NF31



✅ NF32



🕒 NF33



Origin Wood



✓ NF34



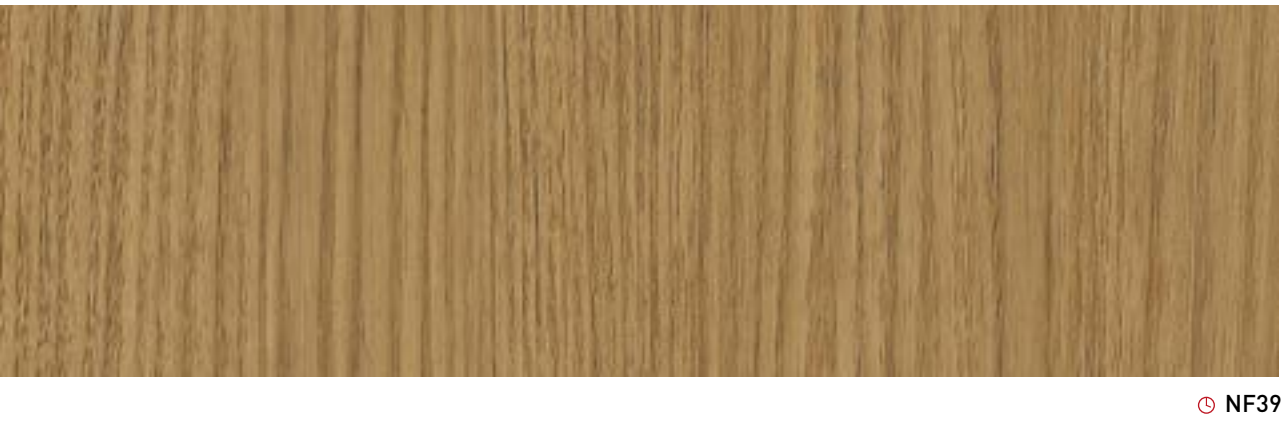
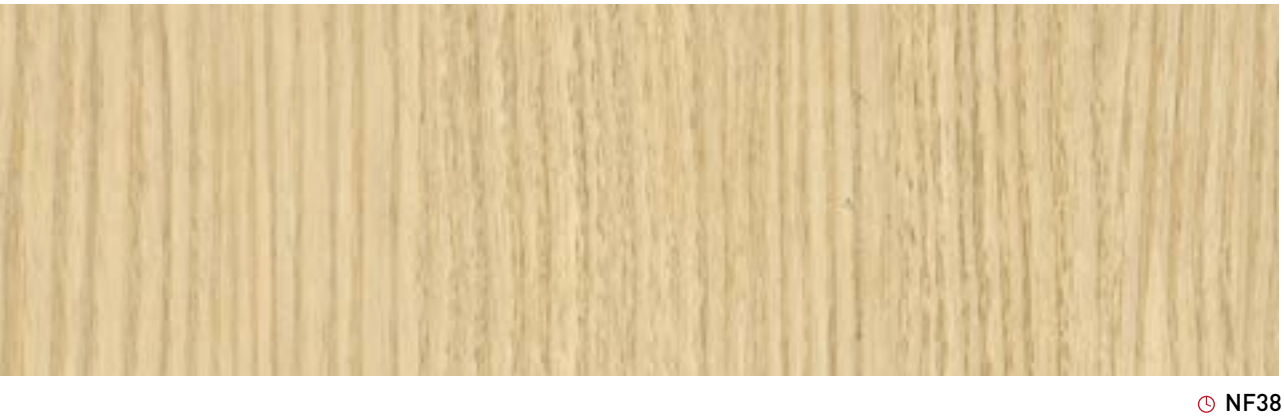
⌚ NF35



NF34

The above image is for illustrational purpose only, and the real product may be different.

Origin Wood





NF40

The above image is for illustrational purpose only, and the real product may be different.

Origin Wood



✓ NF40



⌚ NF41

Origin Wood



🕒 NF42



✅ NF43



NF43

The above image is for illustrational purpose only, and the real product may be different.



NF44

The above image is for illustrational purpose only, and the real product may be different.



🕒 NF45



✅ NF44



NF46

The above image is for illustrational purpose only, and the real product may be different.

Origin Wood



✓ NF46



⊘ NF47

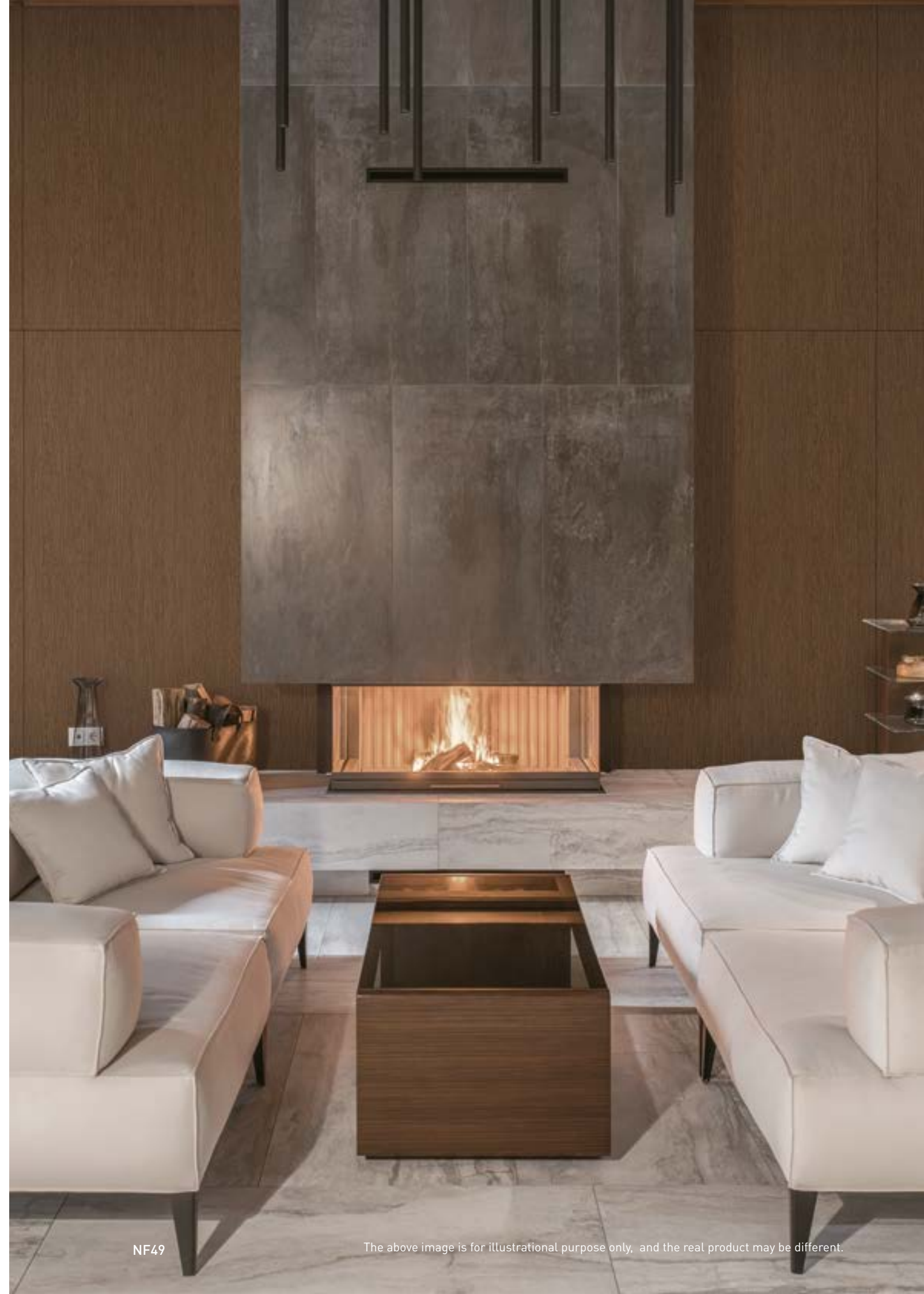
Origin Wood



🕒 NF48



✅ NF49



NF49

The above image is for illustrational purpose only, and the real product may be different.

Origin Wood



🕒 NF50



🕒 NF51



🕒 NF52



NF50

The above image is for illustrational purpose only, and the real product may be different.

Origin Wood



🕒 NF53



🕒 NF54



NF53 | NF54

The above image is for illustrational purpose only, and the real product may be different.



NF55 | NF56

The above image is for illustrational purpose only, and the real product may be different.



✓ NF55



✓ NF56

Suede Wood



⌚ AZ06



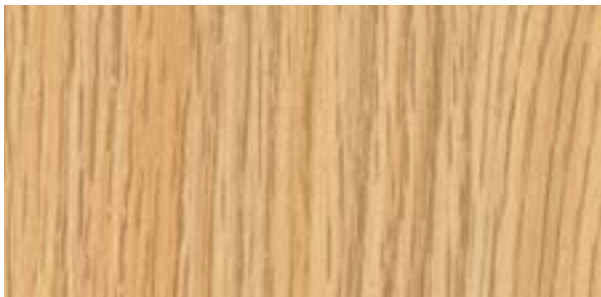
✓ AZ07



✓ B50



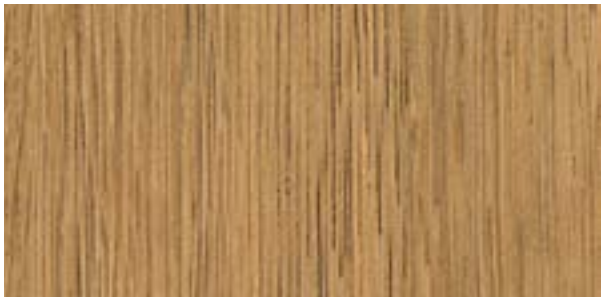
⌚ AZ10



⌚ AZ02



⌚ AZ03



⌚ AZ01



⌚ AZ04

Premium Wood



⌚ AF07



⌚ AF02



⌚ AF09



✓ AF03



✓ AF08



AF08

The above image is for illustrational purpose only, and the real product may be different.



⌚ AF05



⌚ AF06



✓ AF10



⌚ AF01



AF10

The above image is for illustrational purpose only, and the real product may be different.

Rich Wood



✓ NF57



⌚ NF58



⌚ NF59



⌚ NF60



⌚ NF64



⌚ NF62



⌚ NF63

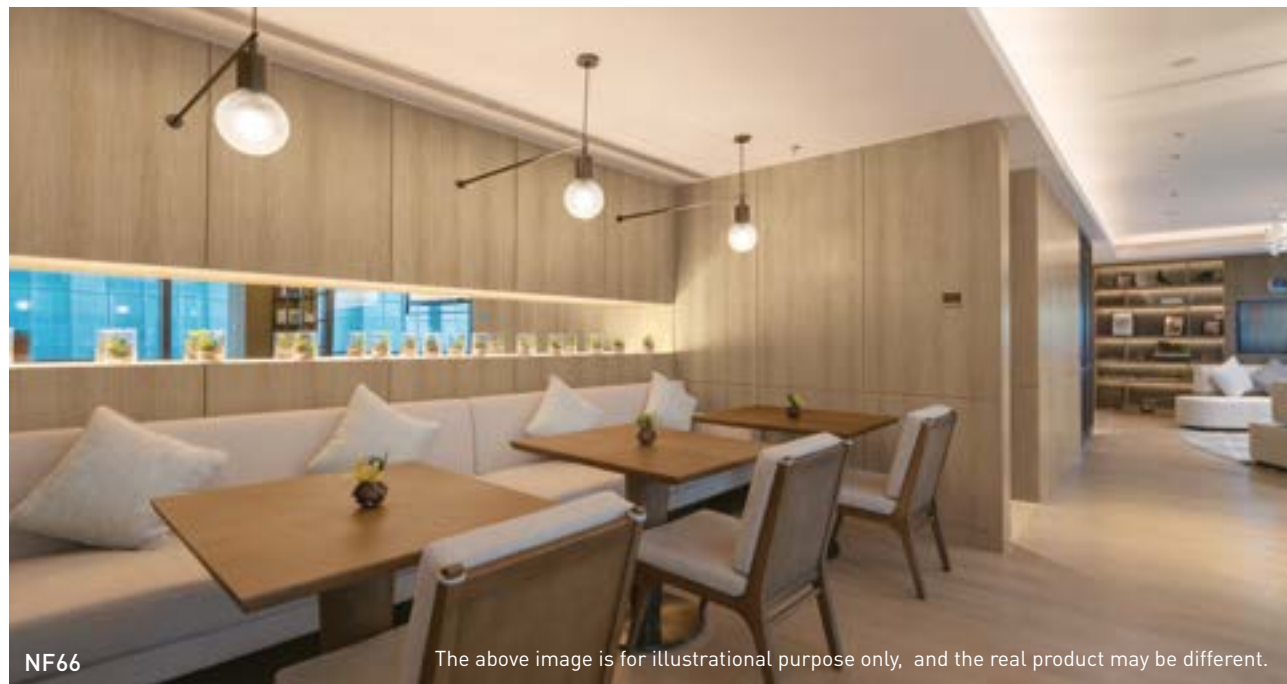


✓ F4



⌚ NF61

Rich Wood



NF66

The above image is for illustrational purpose only, and the real product may be different.



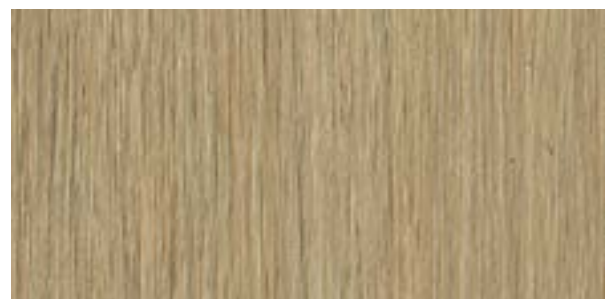
⌚ AA17



⌚ AA01



⌚ AA13



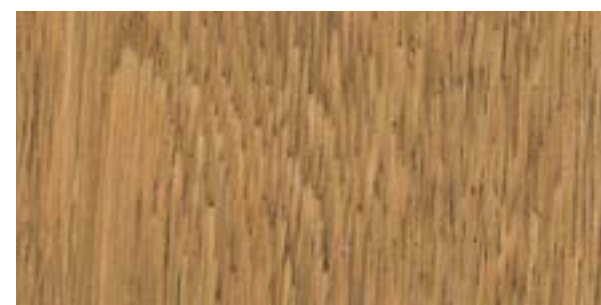
✓ NF66



✓ B8



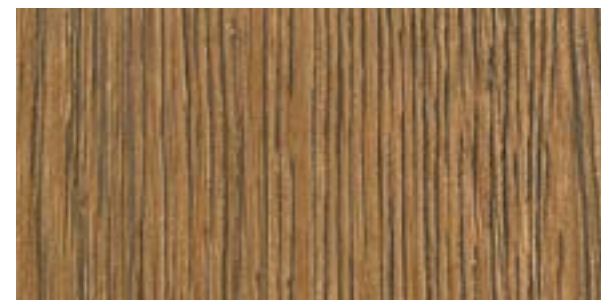
⌚ NF65



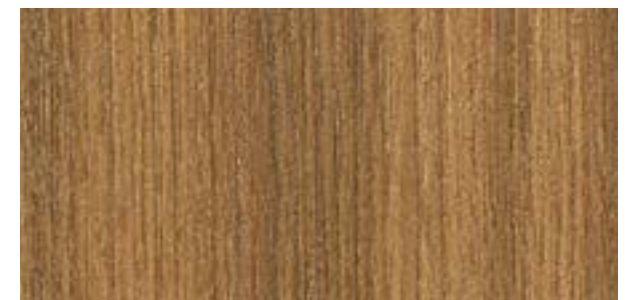
⌚ AA04



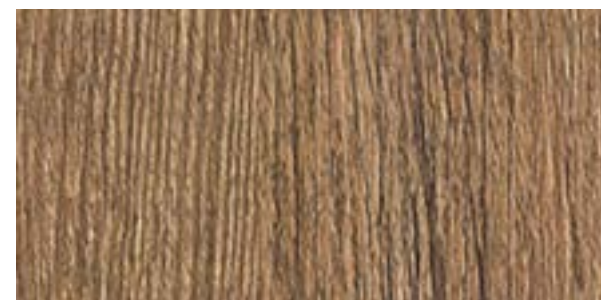
⌚ NF67



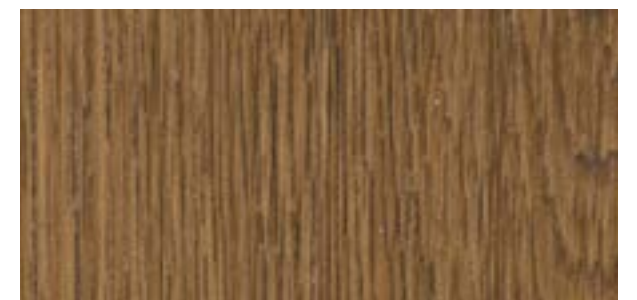
⌚ AA11



⌚ AA02



✓ F5



⌚ AA05



NF67

The above image is for illustrational purpose only, and the real product may be different.

Rich Wood



NF70 The above image is for illustrational purpose only, and the real product may be different.



⌚ NF68



✓ NF70



⌚ AA08



⌚ NF69



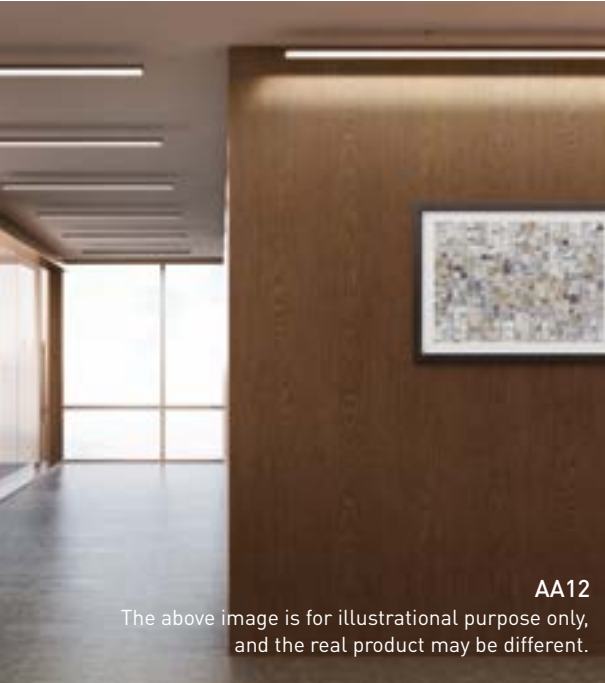
⌚ AA09



✓ AA14



⌚ AA06



AA12
The above image is for illustrational purpose only, and the real product may be different.



✓ AA12



NF71



✓ B9



⌚ NF71

Rich Wood



The above image is for illustrational purpose only,
and the real product may be different.



✓ AL29



⌚ AG01



⌚ AG07



⌚ AG13



⌚ AL10



⌚ AL23



✓ AG20



⌚ AL36



The above image is for illustrational purpose only,
and the real product may be different.



⌚ AL30



⌚ NF72



⌚ AL08



⌚ AG02



⌚ AG08



✓ AG14



⌚ AL26



AG11

Rich Wood



NF73 The above image is for illustrational purpose only, and the real product may be different.



🕒 NF75



🕒 NF76



🕒 NF73



🕒 AG21



🕒 NF74



✅AL24



🕒 AG17



🕒 AG09



🕒 AT03



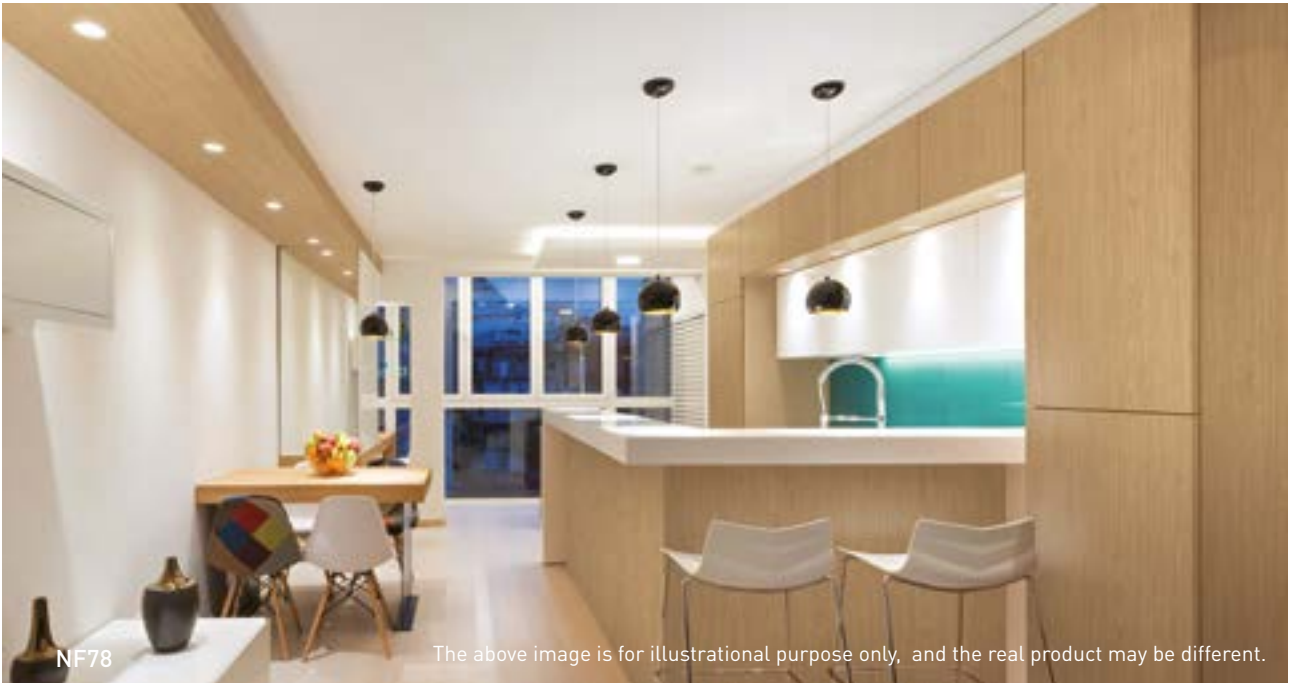
🕒 NF77



🕒 AG18



✅NF78



NF78 The above image is for illustrational purpose only, and the real product may be different.

Rich Wood



🕒 NF80



🕒 AG15



🕒 AG16



🕒 AL28



🕒 NF79



✅ B4



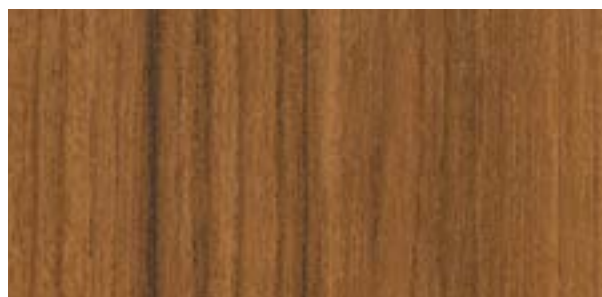
🕒 AT05



🕒 AG10



🕒 AL12



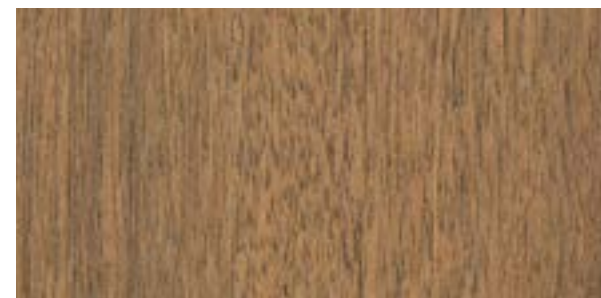
✅ AT04



🕒 NF82



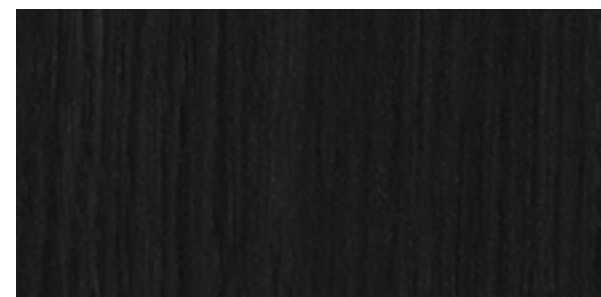
🕒 NF81



🕒 AL25



✅ E50

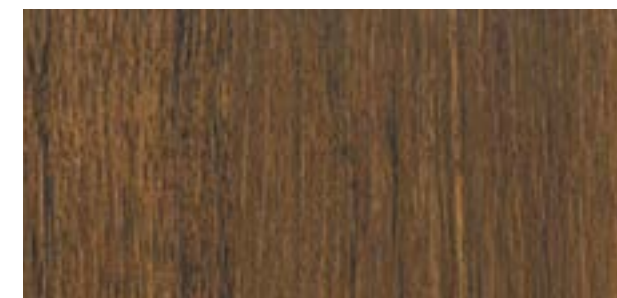


✅ F7



E50

The above image is for illustrational purpose only, and the real product may be different.



🕒 AT02



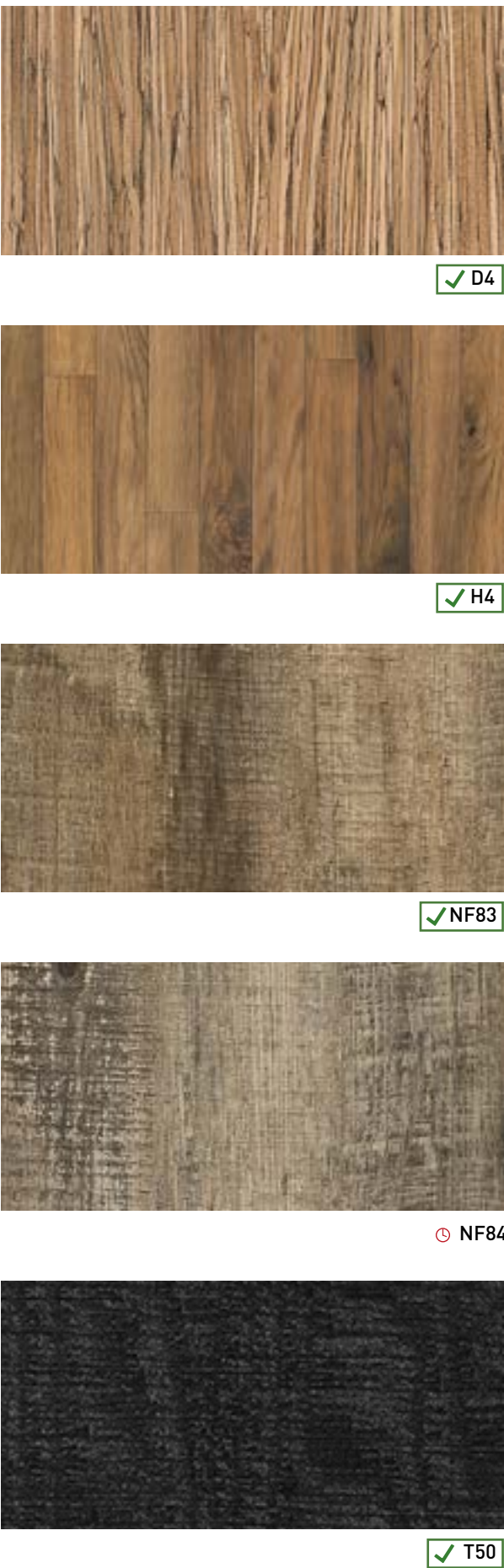
🕒 AT06

Design Wood



NF83

The above image is for illustrational purpose only, and the real product may be different.



✓ D4

✓ H4

✓ NF83

⌚ NF84

✓ T50



D4

The above image is for illustrational purpose only, and the real product may be different.

Standard Wood



⌚ CT91



⌚ CT73



✓ NE63



⌚ CT18



⌚ CT74



⌚ NF85



⌚ CT102



⌚ CT19



⌚ CT13



⌚ NF86



⌚ CT95



✓ CT17



⌚ NE66



⌚ CT76



✓ NE61

Standard Wood



🕒 NF87



🕒 CT20



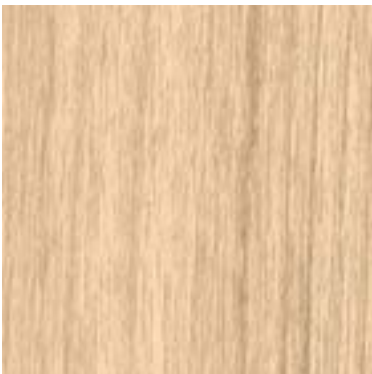
🕒 NE64



🕒 CT28



✔ NE57



🕒 NE65



NF88

The above image is for illustrational purpose only,
and the real product may be different.



🕒 CT33



🕒 NF88



🕒 CT49



🕒 CT100



🕒 CT92



🕒 CT101



🕒 CT94



🕒 CT93



🕒 CT90



🕒 CT40



🕒 CT14



🕒 CT79



🕒 CT62



🕒 NE67

Standard Wood



⌚ CT46



⌚ NF89



⌚ CT48



⌚ CT77



✓ B3



✓ CT82



The above image is for illustrational purpose only, and the real product may be different.



⌚ CT96



⌚ CT01



⌚ CT41



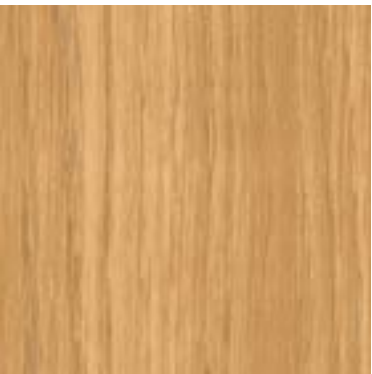
⌚ NF90



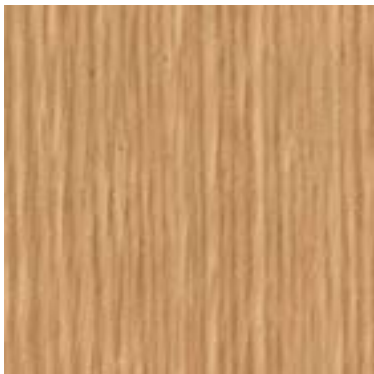
⌚ CT97



✓ I14



⌚ CT75



⌚ CT53



⌚ CT87



⌚ CT45



⌚ CT16



⌚ CT98

Standard Wood



NE68

The above image is for illustrational purpose only, and the real product may be different.



✓ NE68



⌚ NF91



⌚ CT37



⌚ CT06



⌚ CT78



⌚ CT99



⌚ CT70



⌚ CT11



⌚ CT71



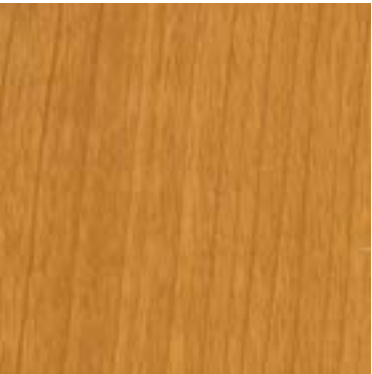
⌚ CT44



⌚ CT22



✓ B5



⌚ CT54



⌚ CT05



✓ B1



⌚ CT09



⌚ CT43



⌚ CT08

Standard Wood



🕒 NF94



🕒 NF92



🕒 CT42



🕒 CT02



🕒 CT10



🕒 NF93



🕒 CT84



🕒 CT27



🕒 CT15



🕒 NF96



✓ CT35



🕒 CT80



🕒 NF95



🕒 CT36



🕒 CT60



🕒 CT88



🕒 CT56



✓ CT69

Standard Wood



🕒 CT21



🕒 NE62



🕒 CT25



🕒 CT29



🕒 CT57



✅ E4



🕒 A4



🕒 CT89



🕒 CT24



🕒 CT67



✅ F6



✅ D1



🕒 CT26



🕒 CT68



✅ A1



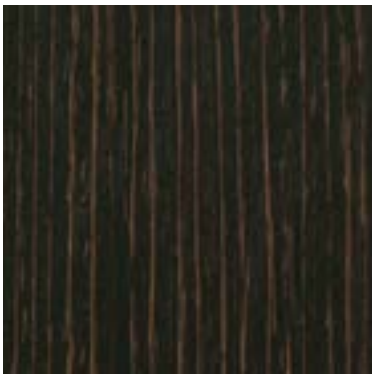
🕒 CT55



🕒 CT66



🕒 CT59



🕒 CT50



🕒 CT52



✅ H5



🕒 CT04



🕒 CT61



✅ CT58

03

Our Marble range gives a chic touch to all your renovations thanks to its super-realistic graining designs. Dark, grey or white, matt or ash... In small touches or in an all-over look, you are spoiled by choice for renovations with a stamp of luxury. Imagine a matt white work surface or a bathroom with ash black splash back...Discover the sumptuous models that will give your establishment an impressive decorative upgrade.

Stone & Marble



Fine patterns and colours that will lead to new trends



Premium Marble



🕒 NF97



✅ NF98

NF98

The above image is for illustrational purpose only, and the real product may be different.

Premium Marble



NE69
The above image is for illustrational purpose only,
and the real product may be different.

✓NE69



NE70
The above image is for illustrational purpose only, and the real product may be different.



✓NE70

Premium Marble



🚫 NG01



🚫 NE71



✅ NF99



NF99

The above image is for illustrational purpose only, and the real product may be different.

Marble



✅ NE31

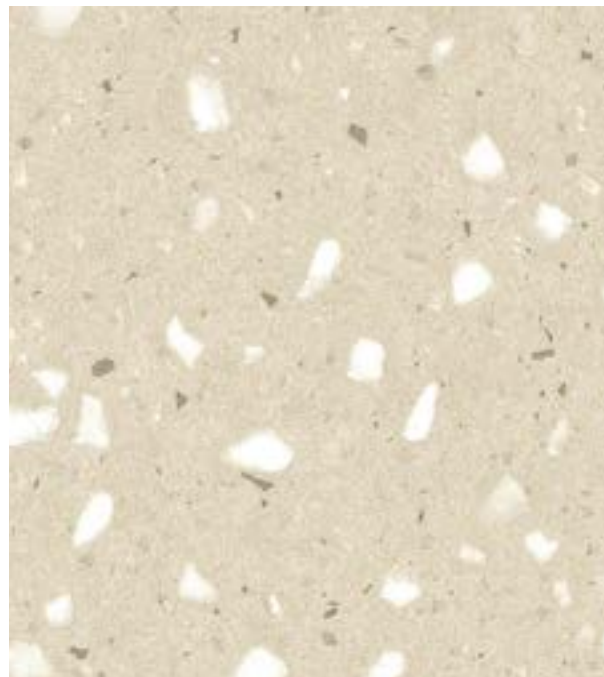


🚫 NE32

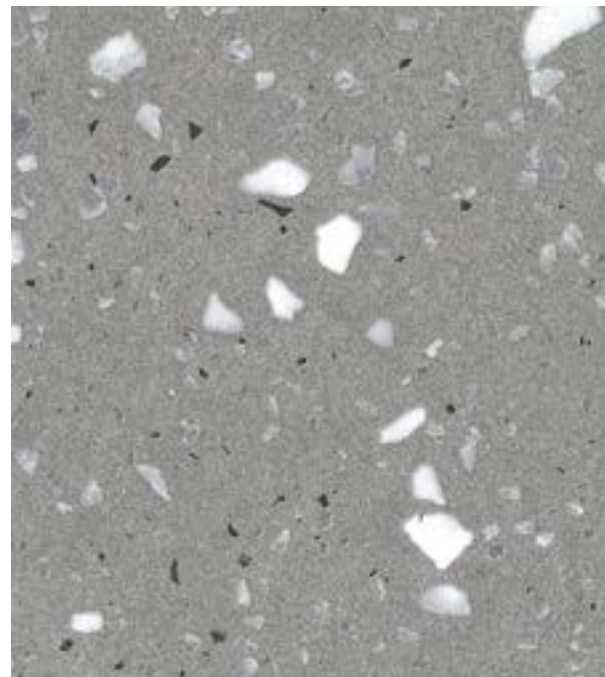


NE31

Stone & Marble



⌚ NG03



✓ NG02



NG02

The above image is for illustrational purpose only, and the real product may be different.



NG04

The above image is for illustrational purpose only, and the real product may be different.

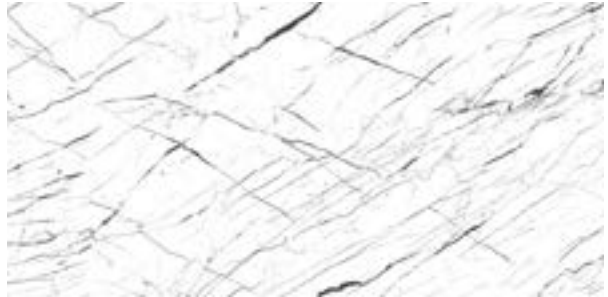


✓ NG04



⌚ NG05

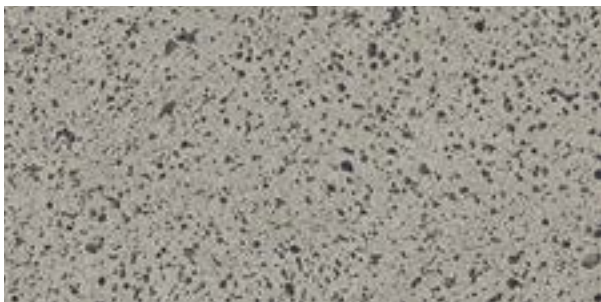
Stone & Marble



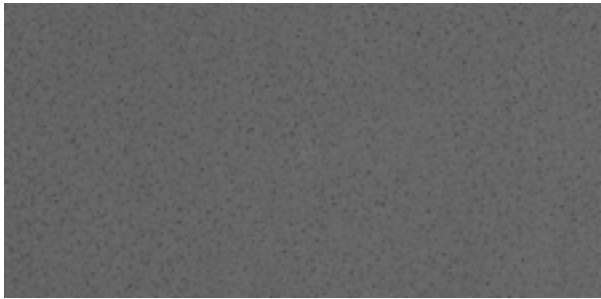
✓ NE72



✓ U50



⌚ NE27



✓ NE28



✓ W7



✓ MK15



⌚ KN04



✓ NE29



⌚ KN05



✓ KN02

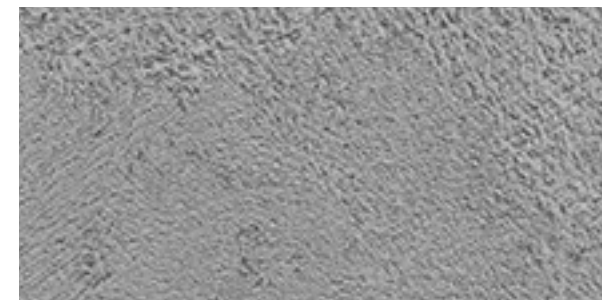


Stone



NE24 | NE26

The above image is for illustrational purpose only, and the real product may be different.



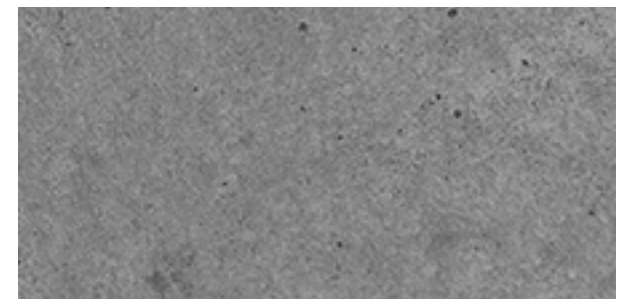
✓ NE24



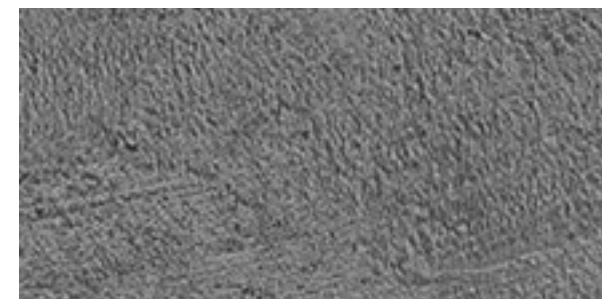
✓ U19



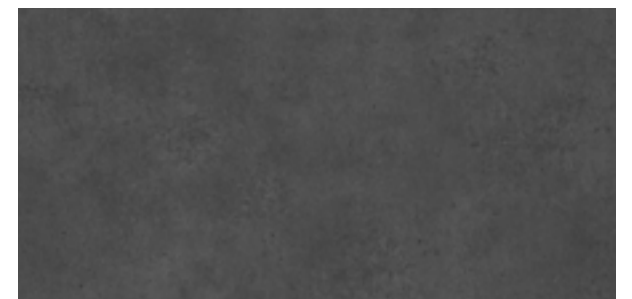
⌚ NE25



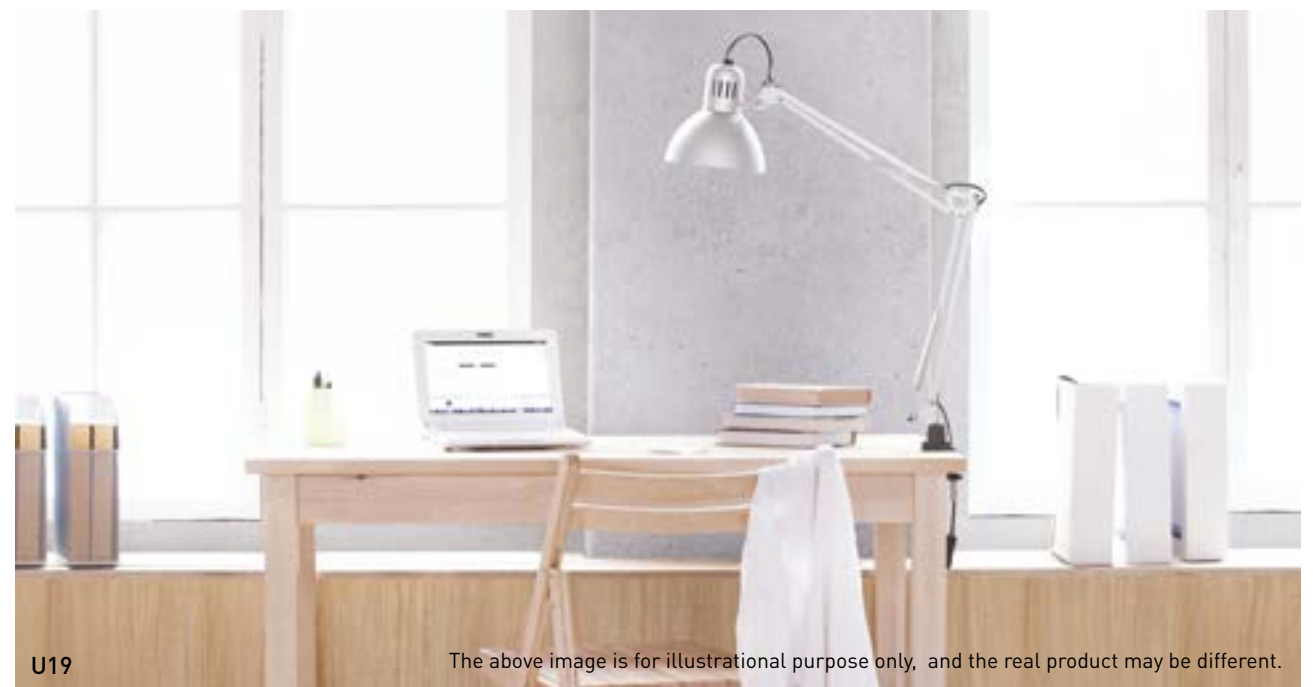
✓ U21



✓ NE26



✓ U20



U19

The above image is for illustrational purpose only, and the real product may be different.

04

Unique materials and colours await you in our Textile range. Ideal for creating a modern but unstructured look! Attract the eye and stir emotions in a bedroom or a dining room thanks to the hypnotic textures of the highly numerous models of the range. As in fashion, textile in décor is a matter of good taste and toning.

Natural Surface



Unique and luxurious texture



NG10

The above image is for illustrational purpose only, and the real product may be different.

Real Fabric

This product, made by a weaving method of weaving PVC yarns one by one into weft and warp yarns, has natural texture and durability unique to fabric.



✓ NG11



✓ NE74



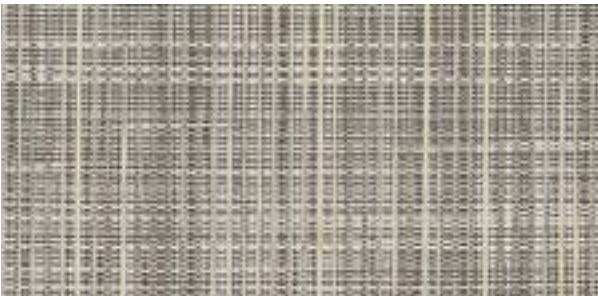
✓ NG10



⌚ NG06



✓ NG07



⌚ NG08



⌚ NG09



✓ NE73

Fabric



NG13 The above image is for illustrational purpose only, and the real product may be different.



⌚ NG12



✓ MK18



✓ NG13



⌚ MK19



NE37 The above image is for illustrational purpose only, and the real product may be different.



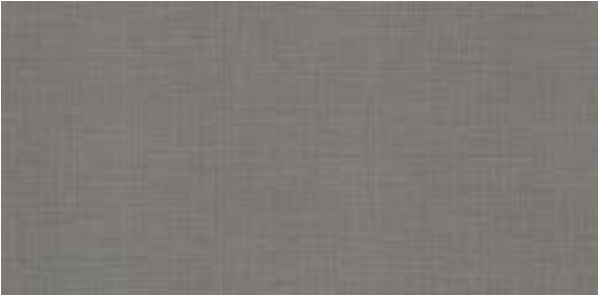
✓ ST02



✓ NE38



⌚ NE36

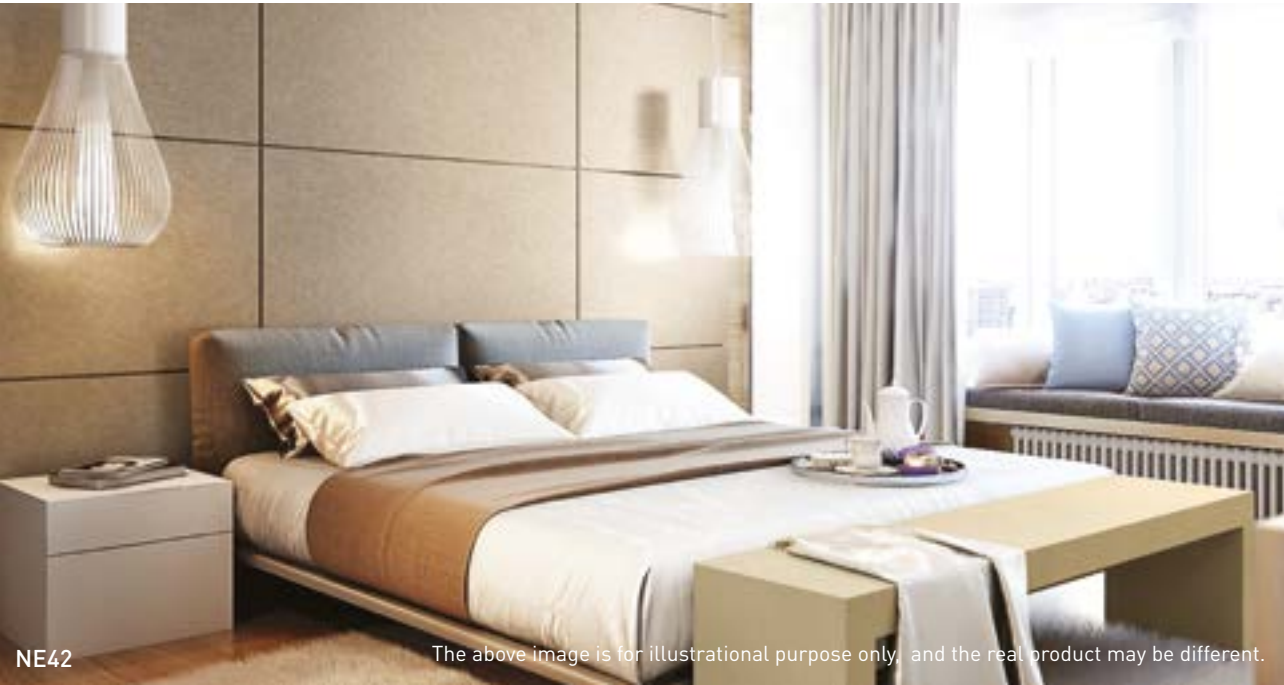


✓ NE37



✓ NE33

Deep Emboss Leather



NE42 The above image is for illustrational purpose only, and the real product may be different.



✓ NE43



✓ NG19



✓ NE42



⌚ NG18



✓ NE41



✓ NG17



✓ NG23



✓ NG20



⌚ NG22



⌚ NG21



NG20 The above image is for illustrational purpose only, and the real product may be different.



Real Metal



NE47 | NE49



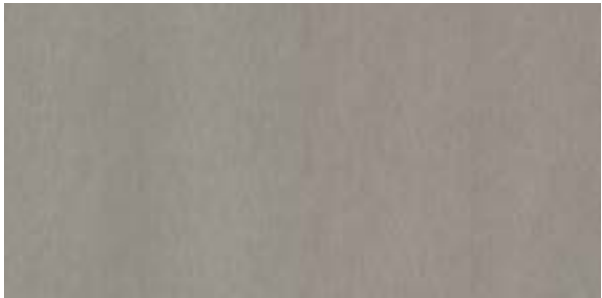
⌚ ND03



⌚ ND04



⌚ ND07



✓ NE51



✓ NE47



⌚ ND01



✓ Q50



⌚ ND02



✓ NE48



✓ NE49



⌚ ND05

Metal



⌚ NG29



✓ NG28



NG28

The above image is for illustrational purpose only, and the real product may be different.



AL15

The above image is for illustrational purpose only, and the real product may be different.



✓ AL11



⌚ AL13



✓ AL15



⌚ AL17



⌚ AL07



✓ AA15



✓ AL14



✓ NE13



✓ B6



✓ G6



✓ I10



✓ G0



✓ H10



✓ H50



✓ I7



✓ I9



✓ I11

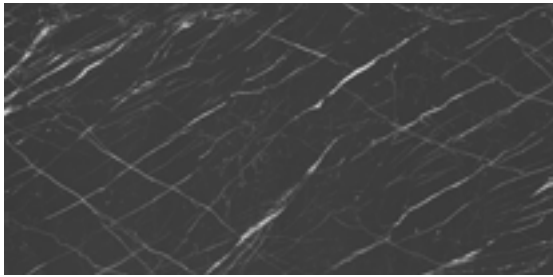




✓NG31



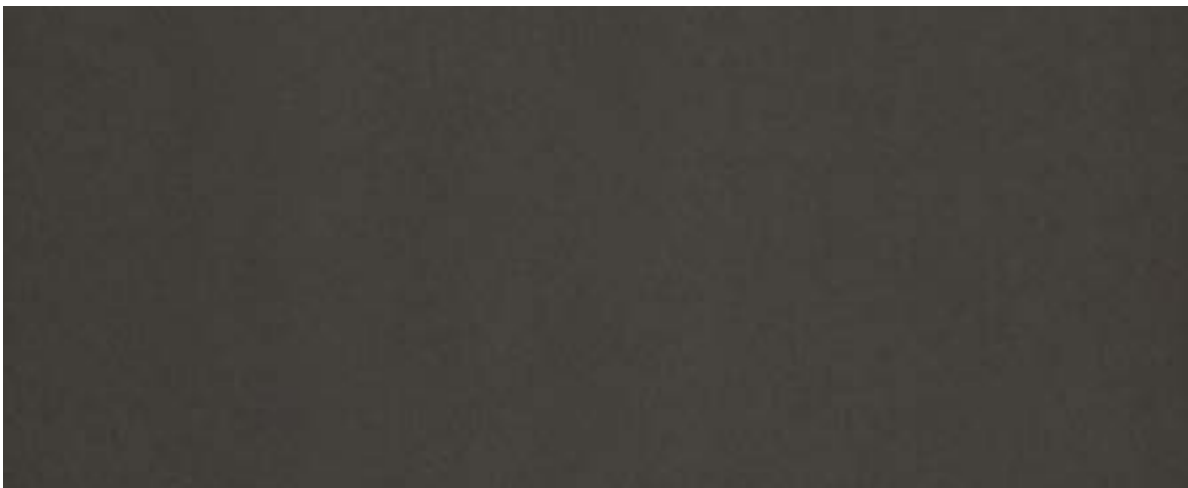
✓MK13



✓MK14



X6—



✓NE40



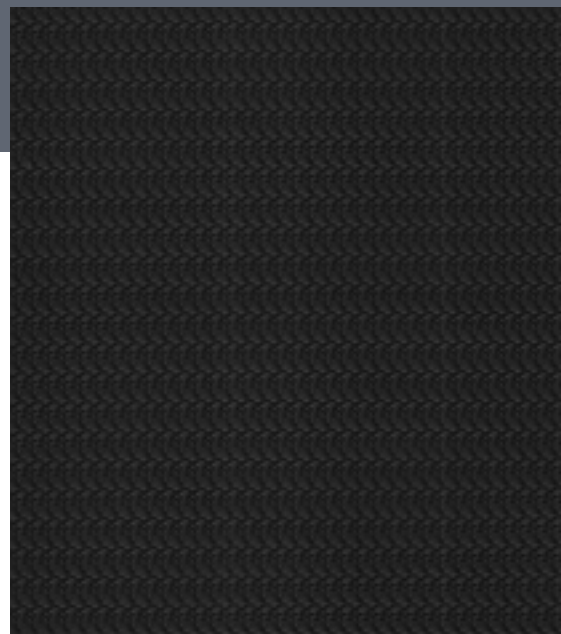
NE40—



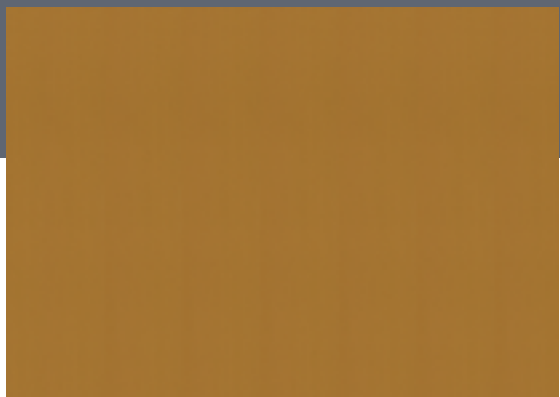
✓X6



✓X51



✓ Z2



✓ Q3



✓ AL09



✓ T10



✓ T12



✓ K2



✓ 02



✓ 07

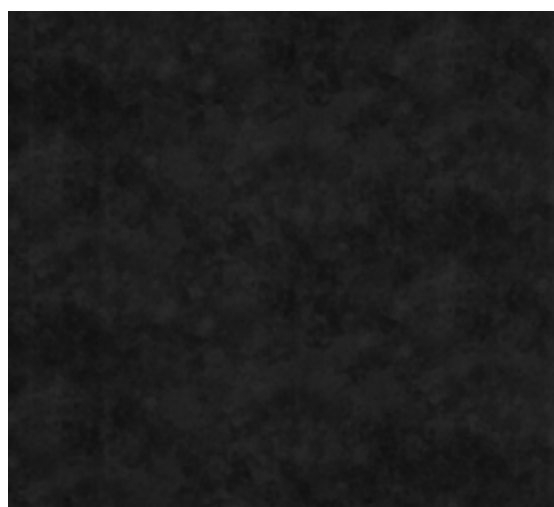


✓ L50





✓ W6



✓ U10



✓ W7



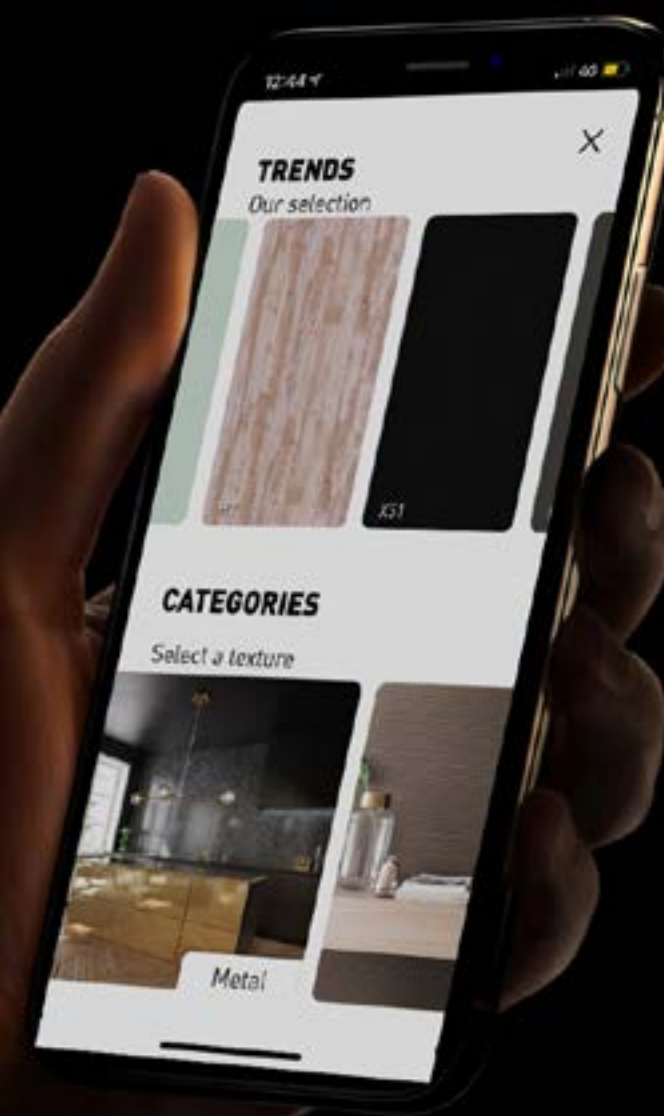
✓ W8



✓ W9



DOWNLOAD OUR APPLICATION





The above image is for illustrational purpose only, and the real product may be different.



The above image is for illustrational purpose only, and the real product may be different.



Quality



Easy



Fast



Limitless



Cost Efficient

info@coverstyl.com

